A photograph of a modern, rectangular concrete plunge pool in a backyard. The pool is filled with clear, light blue water. To the left, there is a tall, dark grey vertical slat fence. In the background, a large palm tree stands against a clear blue sky. To the right, a portion of a light blue house with white trim is visible. The pool deck is made of light-colored, textured concrete. In the foreground, a blue bottle of sunscreen, a wide-brimmed hat, and a towel are resting on the deck.

# Award Winning Concrete Plunge Pools



Blue Lagoon ecoFINISH

## The fastest, easiest and highest quality concrete plunge pools

Our award-winning precast plunge pools are the first of their kind, bringing the fastest, easiest, and highest quality concrete pool to the market.

By deconstructing, re-engineering and optimising the concrete pool building process, we've streamlined both production and on-site build times.

Customers love us because we deliver a sophisticated pool quickly and in a way that doesn't break the bank. It also means they don't have to deal with old mate pool builder Brian\* who spends half his time taking smoko.

Builders love us because we provide a straightforward solution that allows them to deliver their projects on time and within the budget—and they don't have to deal with Brian either.

\* Sorry if you know a pool builder named Brian - we're sure he's actually a good guy.



Blue Lagoon ecoFINISH

## Arena

Our Arena is the most sophisticated, architecturally-designed, round concrete plunge pool in the world.

At 3.5m and featuring ample, arena-style bench space, this plunge pool is perfect for bringing people together.

Diameter	External 3500mm	Internal 3200mm
Height	External 1690mm	Internal 1590mm
Volume	9150L	
Dry Weight	7,000kg	
<b>Price</b>	<b>\$11,990</b>	<b>+ Delivery</b>



Mediterranean Blue ecoFINISH

## Studio

Baby brother to the Original, our Studio has been designed specifically for smaller spaces and is the perfect solution for inner-city living.

At 3.6m x 2.2m, the Studio delivers practicality by way of design with two metres worth of bench space.

Length	External 3600mm	Internal 3420mm
Width	External 2200mm	Internal 2020mm
Height	External 1690mm	Internal 1590mm
Volume	8,000L	
Dry Weight	6,800kg	
<b>Price</b>	<b>\$12,990</b>	<b>+ Delivery</b>



Kona Coast ecoFINISH

## Original

Where it all began: our Original. This pre-cast concrete plunge pool is our most popular design, finding its way into the backyard of many Australians.

Tried and tested using key design principles, this 4.6m x 2.5m pool delivers instant lifestyle value to a home.

Length	External 4600mm	Internal 4400mm
Width	External 2500mm	Internal 2300mm
Height	External 1690mm	Internal 1590mm
Volume	13,400L	
Dry Weight	9,400kg	
<b>Price</b>	<b>\$14,990</b>	<b>+ Delivery</b>



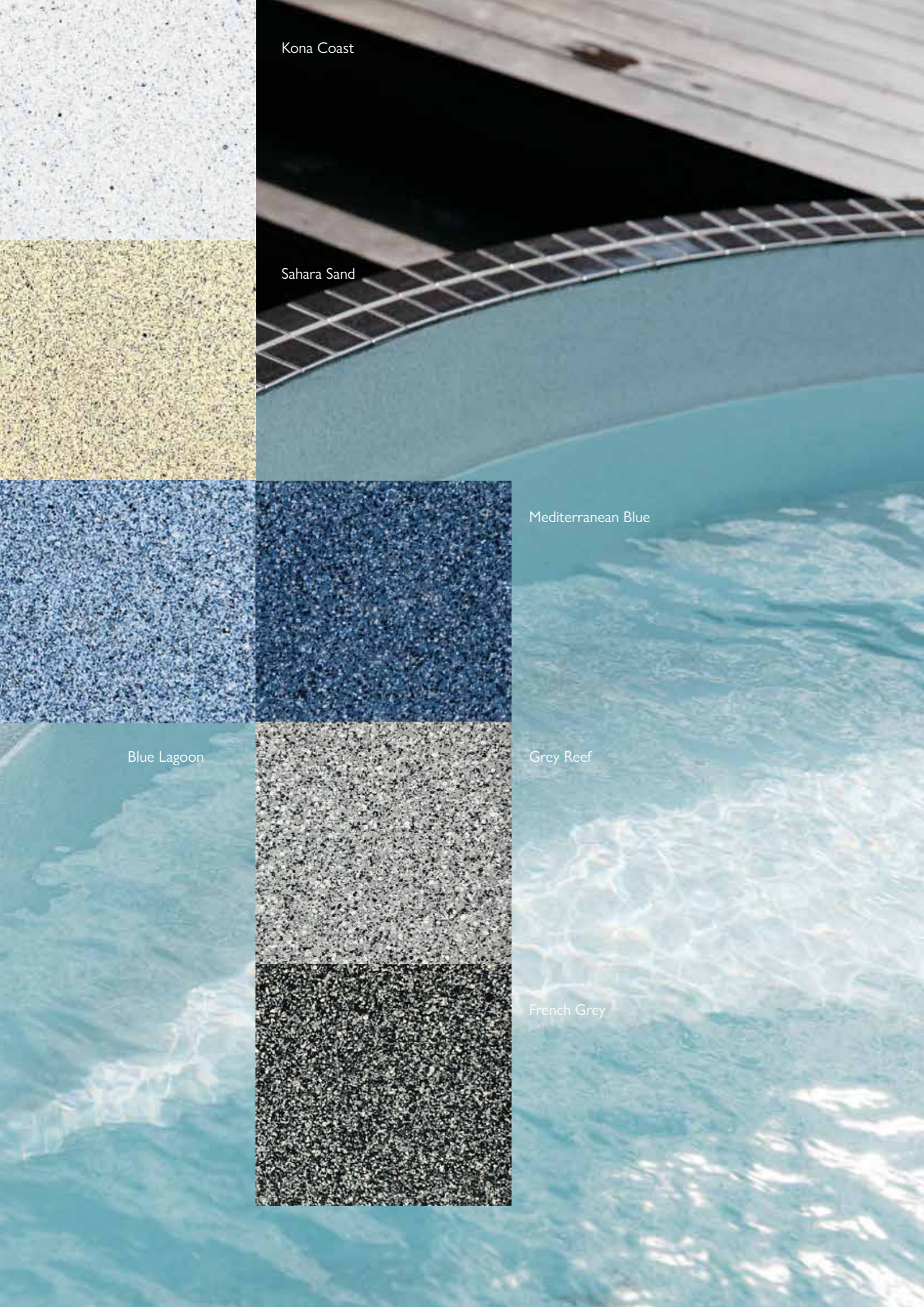
Kona Coast ecoFINISH

## Max

The world's largest monolithic pre-cast concrete swimming pool, our Max delivers style by way of design and functionality.

At 6m x 3m, this swimming pool sized Plungie is the largest of our range and is perfect for larger families.

Length	External 6000mm	Internal 5820mm
Width	External 3000mm	Internal 2820mm
Height	External 1690mm	Internal 1590mm
Volume	20,100L	
Dry Weight	11,800kg	
<b>Price</b>	<b>\$19,990</b>	<b>+ Delivery</b>



Kona Coast

Sahara Sand

Mediterranean Blue

Blue Lagoon

Grey Reef

French Grey

# Enjoy your pool in days, not months

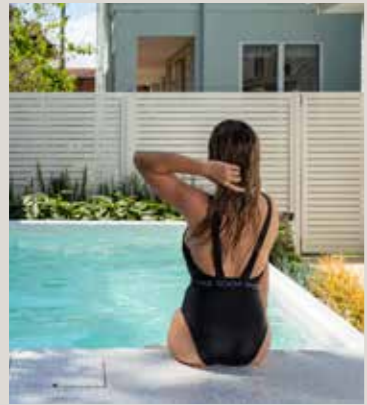
Our pools are completely functional from manufacturing right through to transportation and installation.

We want your experience purchasing a Plungie to be as easy as possible, which is why they're supplied with pre-constructed fittings. To ensure on site works are minimal, fast and cost-effective, the following inclusions are standard in every plunge pool:

- » Highly engineered concrete pool shell
- » High-performance ecoFINISH interior
- » Spa electrics multi-coloured LED light
- » Poolrite innoSkim skimmer box
- » Technical designs and pre-engineered specifications for ease of building approvals
- » Pre-plumbed and fitted filtration, safety suction and heating line provisions.

Every Plungie comes with an internal high-performance thermo polymer coating—which is the fancy way of describing ecoFinish.

ecoFinish is a powder coating that's sprayed and heated onto the internal shell of the pool, forming a completely flexible waterproof membrane that's both luxurious to the touch, and highly durable.



# A process to get you and your family swimming sooner

By taking what was once a constructed solution and turning it into a manufactured one, we've managed to streamline a process that would normally take up to 16 weeks.

As the provider, we can have your pool delivered with a lead time as little as two weeks – all you need to do is choose an install solution that suits you.

Our three installation solutions give you total control over how quickly you can be swimming:

1. Bring Your Own Builder (BYOB)
2. Plungie Partner
3. Owner Builder



## Bring Your Own Builder (BYOB)

Organising your own builder to install your Plungie is easy with our pre-engineered specification and installation instructions.

Connect them in with us and we'll take the heavy lifting out of it.

## Plungie Partner

Our ever-growing network of full-service partners around Australia can take care of as much or as little of your project for you.

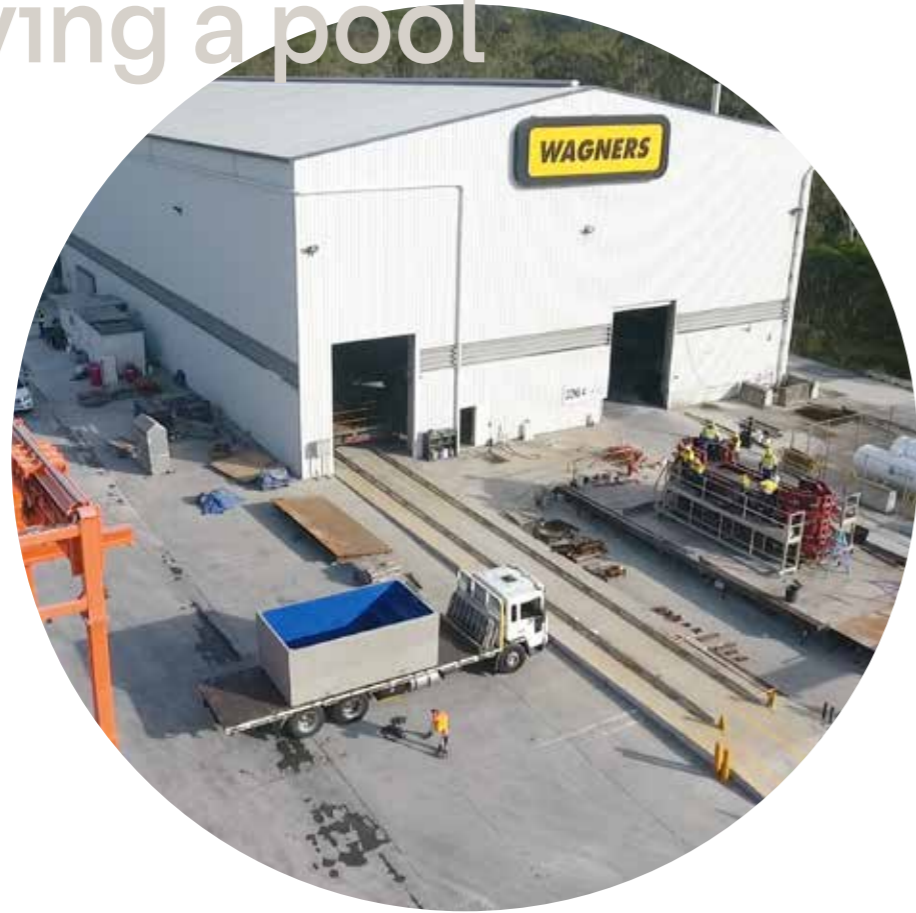
Only available in certain regions – check with us to see whether there's a partner near you.

## Owner Builder

Skilled or handy around the home?  
Or maybe you're a builder yourself.

You can utilise your know-how or trade qualifications to manage your own project as an owner builder.

# We've taken the guesswork out of buying a pool



We have an exclusive partnership with Wagners; the global leader in advanced precast concrete technologies. Because of this partnership, every Plungie® is manufactured in an ISO 9001, 14001, and 45001 accredited facility and we know to the gram how much steel and concrete will be in your pool.

Our ability to manufacture at scale has simplified our pool buying process into six-easy steps.

1. Fall in love with Plungie
2. Understand your project
3. Find your install solution
4. Purchase your Plungie
5. Lock in delivery date
6. Install and swim.





# Fall in love with Plungie

Falling in love with a Plungie is easy.

With a wide range of shapes and sizes, from our 3.5m round Arena all the way through to the world's largest monolithic pre-cast swimming pool, the Max, there's a Plungie for every family and lifestyle.

## Understand your project

At this stage you'll need to know the Plungie model you're after, the preferred location in your yard as well as the installation depth (in-ground, above-ground, semi above-ground) and accessibility to your site.

## Find your install solution

Your install solution will help you manage your project and while no two projects are exactly the same, every project involves:

- » Site plan and building approvals
- » Crane hire engagement
- » Earthworks and base slab
- » Plumb up of equipment and electrical
- » Finishing of pools surrounds: fencing, decking, landscaping, etc.



## Purchase your Plungie

You can purchase your Plungie directly from us, through one of our dealer networks or through your builder.

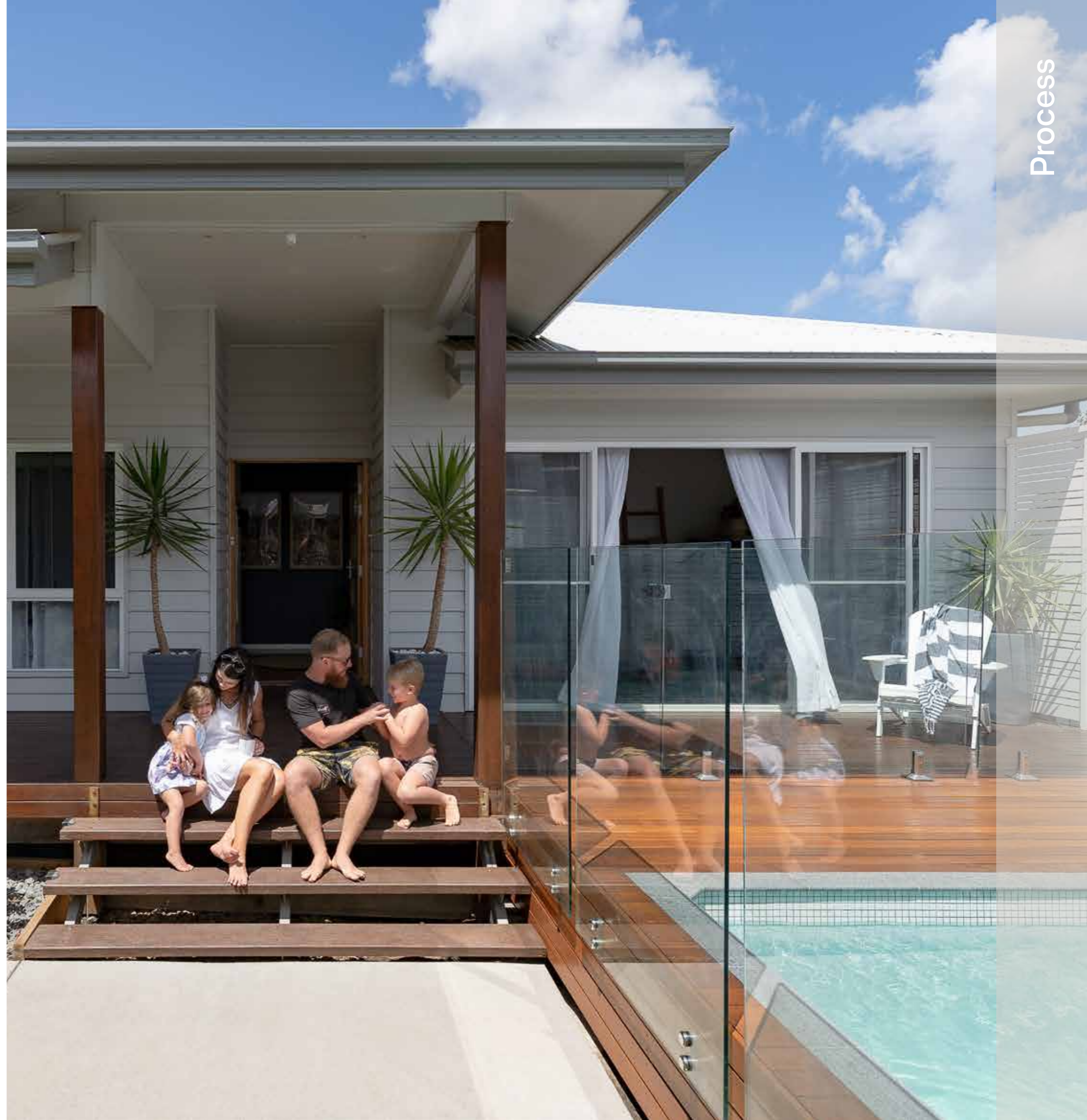
All of our pools are manufactured in Brisbane, and delivered Australia-wide.

## Lock in delivery date

With industry leading lead times, you'll be able to lock in your delivery date as quickly as two to three weeks from when you purchase your Plungie.

## Install and swim

Because of its pre-cast, pre-fabricated solution, the on-site works to install a Plungie are faster than any other pool solution on the market - so you and your family can be swimming sooner.



## Selling your home and want to add more value?

Adding a Plungie is a quick and easy way to increase the value of your home and appeal to more buyers. We can give you specialist advice around how long it would take and how much it would cost to add a Plungie before selling.

## Buying a new home and after one with a pool?

It's fast, easy, and cost-effective to add a Plungie to a potential home. Reach out to us if you find a property without a pool and we can help you make an informed decision in advance about how much it would be to have a Plungie added.

## Looking to build a new home with a pool?

Getting your builder to install a Plungie to your site prior to any site works commencing is the fastest, easiest, and most cost-effective way to enjoying a pool. Give us a call, send through your site plans, or better still, let your builder know you'd love a Plungie and we'll look after the rest.

## Wanting to improve the value of your home?

You can add a premium, concrete pool to your yard in a matter of days, not months. Quickly accelerate your home improvement journey and turn your yard into an outdoor entertainment space. Contact us to add instant value, appeal, and lifestyle to your property.

